

7940 NORTH WEST LLC Program of areas for Residential Units

LAND AREA	33600	APT. AREA	111,979.00 SF														
FAR	4	BALCONY	23,743.00 SF	(25% OF MAX. BUILDABLE AREA = 33,600 SF)													
MAX BUILDABLE AREA	134400	TOTAL	135,722.00 SF														
	3BD		3BD		2BD		2BD		3BD		3BD		CORRIDOR	BALCONY			TOTAL GROSS FLOOR AREA
	01	BALCONY	02	BALCONY	03	BALCONY	04	BALCONY	05	BALCONY	06	BALCONY					
15th	2,565.00	1,403.00	2,816.00	1,403.00	2,553.00	1,403.00	2,764.00	1,403.00						5,612.00			10,698.00
14th	2,060.00	358.00	2,060.00	358.00	742.00		1,020.00		2,060.00	358.00	2,060.00	358.00	529.98	1,432.00			10,002.00
13th	2,060.00	358.00	2,060.00	358.00	1,366.00	364.00	989.00	384.00	2,060.00	358.00	2,060.00	358.00	539.23	2,180.00			10,595.00
12th	2,060.00	358.00	2,060.00	358.00	742.00		1,020.00		2,060.00	358.00	2,060.00	358.00	539.23	1,432.00			10,002.00
11th	2,060.00	358.00	2,060.00	358.00	1,366.00	364.00	989.00	384.00	2,060.00	358.00	2,060.00	358.00	539.23	2,180.00			10,595.00
10th	2,060.00	358.00	2,060.00	358.00	742.00		1,020.00		2,060.00	358.00	2,060.00	358.00	539.23	1,432.00			10,002.00
9th	2,060.00	358.00	2,060.00	358.00	1,366.00	364.00	989.00	384.00	2,060.00	358.00	2,060.00	358.00	539.23	2,180.00			10,595.00
8th	2,060.00	358.00	2,060.00	358.00	742.00		1,020.00		2,060.00	358.00	2,060.00	358.00	539.23	1,432.00			10,002.00
7th	2,060.00	358.00	2,060.00	358.00	1,366.00	364.00	989.00	384.00	2,060.00	358.00	2,060.00	358.00	539.23	2,180.00			10,595.00
6th		358.00	2,060.00	358.00	743.00		1,352.00	202.00			1,692.00	358.00	691.22	1,276.00			5,847.00
5th	2,065.00	168.00	1,920.00	168.00	1,330.00	364.00	1,893.00	96.00						796.00			7,208.00
4th	2,065.00	168.00	1,920.00	168.00	1,853.00	1,275.00								1,611.00			5,838.00
3rd	GARAGE																
2nd	GARAGE																
	23,175.00	4,961.00	25,196.00	4,961.00	14,911.00	4,498.00	14,045.00	3,237.00	16,480.00	2,864.00	18,172.00	3,222.00		23,743.00	21% AREA		111,979.00
1st	LOBBY	LOUNGE	MECH. RM	RECEIVING	TRASH RM	MANAGER											
	1,600.63	1,353.49	1,302.05	460.01	216.51	189.98							451.97				5,574.64
117,553.64																	

Section 152.0296 (D)(4)(b)

Gross floor area.

Total area of all floors of a building that are enclosed including common areas such as elevators (area of shafts at ground floor only), stairs (except open stairways and enclosed stairways which are means of egress required by the fire department), corridors, interior recreation areas, storage, cabana, lobby, restrooms, etc. All these items are excluded: The garage structure with any required means of egress, and any open but covered walkways, exterior balconies, open decks, and terraces at the recreational area.

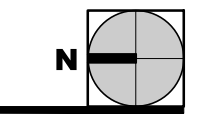
Gross Floor Area calculations parameters:

- 1 Level 1 includes all enclosed spaces and elevator shaft, except fire escape stairs and parking garage areas
- 2 Garage levels are not included (2, 3, 4 & 5)
- 3 Level 6: Includes all enclosed areas (living units, corridors, amenities, restroom) . Does not include open pool deck
- 4 Apartment levels (7 thru 15) includes living units and corridors. Does not include balconies, elevator shaft and fire escape stairs.

THE DESIGNS INDICATED IN THESE DRAWINGS ARE PROPERTY OF ALTIELER ARCHITECTS INTERNATIONAL. ALL COPYRIGHTS RESERVED © 2014



1 PROPOSED FLOOR PLAN LEVEL 1
SCALE: 1" = 10'-0"



Atelier architects international
1800 SW 1st Ave, Suite #604
Miami, FL 33129
Phone: (786) 342-1755
Fax: (305) 974-1980
www.atelierintl.com



Hernan Santarcangelo, Architect
AR 96867



Victor H. Rodriguez, Architect
AR 94965
1800 SW 1st Ave, Suite #607
Miami FL 33129

**7940 WEST AVENUE LLC
NORTH BAY VILLAGE**

14-097

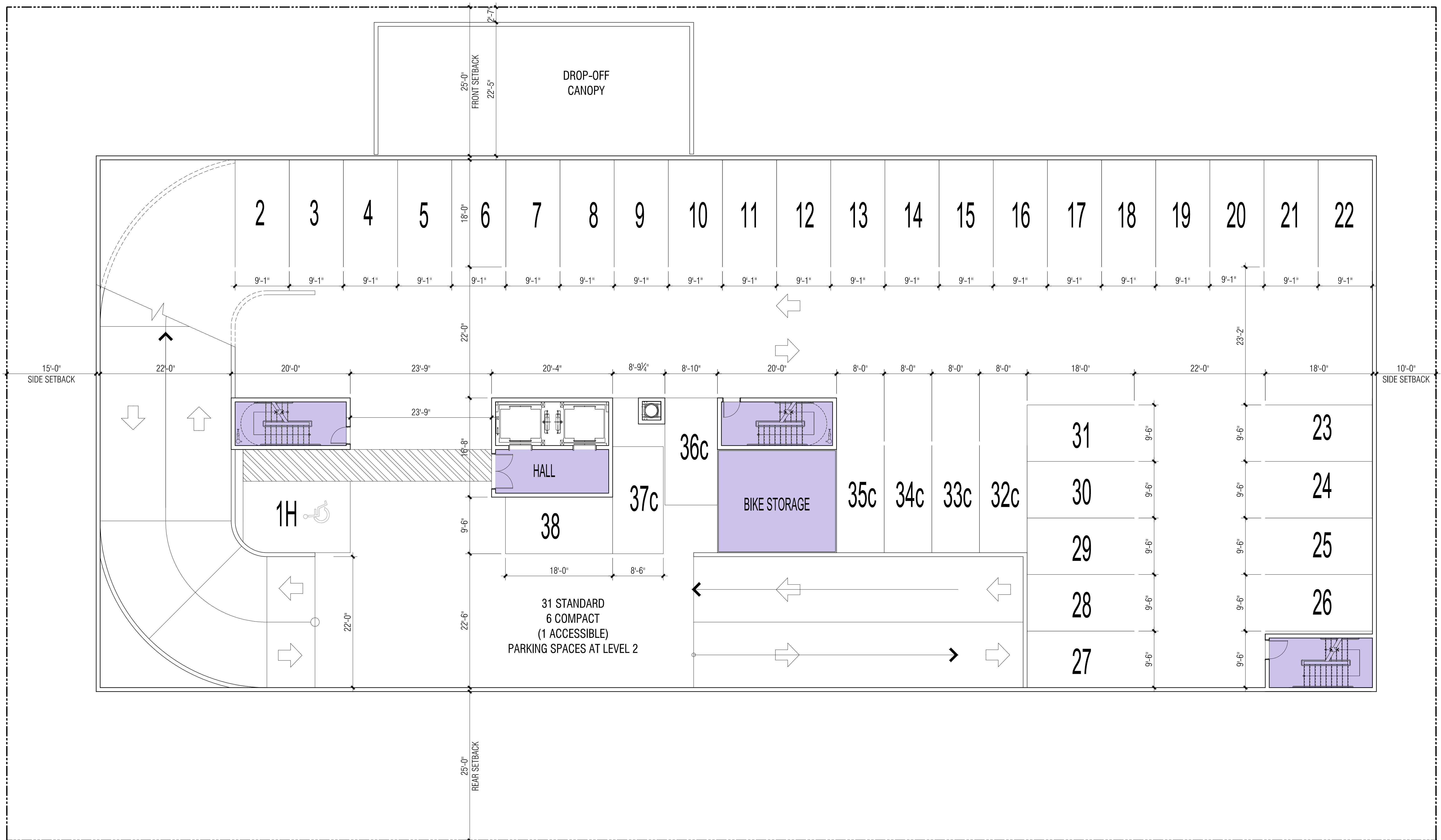
ALL DRAWINGS AND WRITTEN MATERIAL APPEARING HEREIN CONSTITUTE THE ORIGINAL AND UNPUBLISHED WORK OF ALTIELER ARCHITECTS INTERNATIONAL, LLC. AND MAY NOT BE DUPLICATED, USED, OR DISCLOSED WITHOUT THE EXPRESS WRITTEN CONSENT OF ALTIELER ARCHITECTS INTERNATIONAL, LLC © 2014

1	29 AUG	SITE PLAN SUBMITTAL
2	31 OCT	REVISION 01

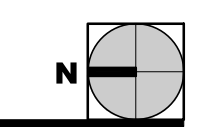
Date: 18 SEPT-14
Drawn: A.N.V.
Designed by: H.S.
Checked by: H.S.
SCALE: 1/8" = 1'-0"

A1.101

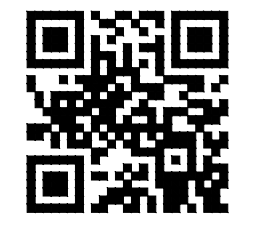
THE DESIGNS INDICATED IN THESE DRAWINGS ARE PROPERTY OF ATELIER ARCHITECTS INTERNATIONAL. ALL COPYRIGHTS RESERVED © 2014



1 PROPOSED FLOOR PLAN LEVEL 2
 SCALE: 1/8" = 1'-0"



Atelier architects international
 1800 SW 1st Ave, Suite #604
 Miami, FL 33129
 Phone: (786) 342-1755
 Fax: (305) 974-1980
 www.atelierintl.com



Hernan Santarcangelo, Architect
 AR 96867

Associated Architect



Victor H. Rodriguez, Architect
 AR 94965
 1800 SW 1st Ave, Suite #607
 Miami FL 33129

**7940 WEST AVENUE LLC
 NORTH BAY VILLAGE**

14-097

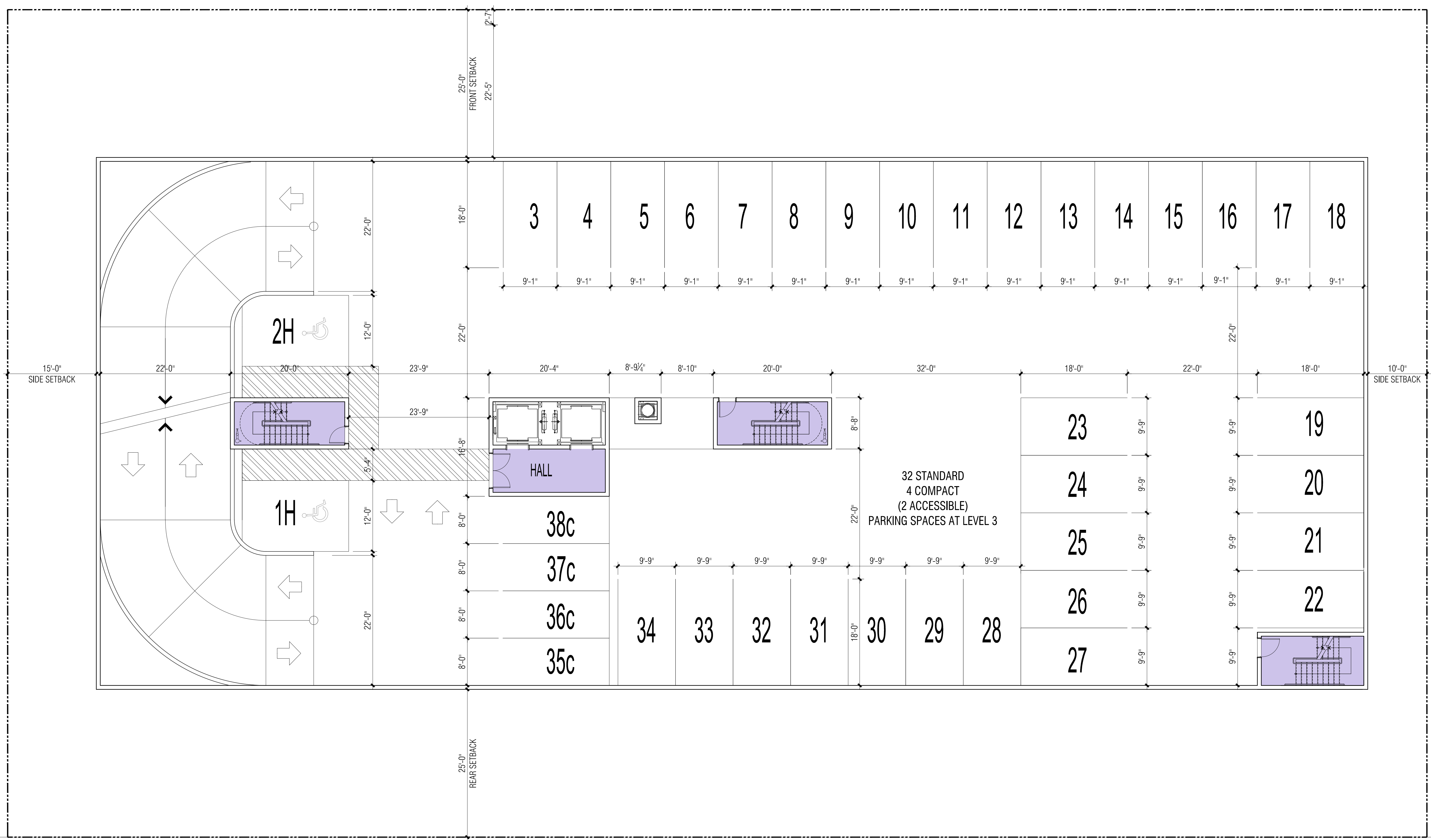
ALL DRAWINGS AND WRITTEN MATERIAL APPEARING HEREIN CONSTITUTE THE ORIGINAL AND UNPUBLISHED WORK OF ATELIER ARCHITECTS INTERNATIONAL, L.L.C. AND MAY NOT BE REPRODUCED, COPIED, OR DISCLOSED WITHOUT THE EXPRESS WRITTEN CONSENT OF ATELIER ARCHITECTS INTERNATIONAL, L.L.C. © 2014

1	29 AUG	SITE PLAN SUBMITTAL
2	31 OCT	REVISION 01

Date: 18 SEPT-14
 Drawn: A.N.V.
 Designed by: H.S.
 Checked by: H.S.
 SCALE: 1/8" = 1'-0"

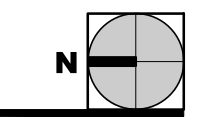
A1.102

THE DESIGNS INDICATED IN THESE DRAWINGS ARE PROPERTY OF ATELIER ARCHITECTS INTERNATIONAL. ALL COPYRIGHTS RESERVED © 2014

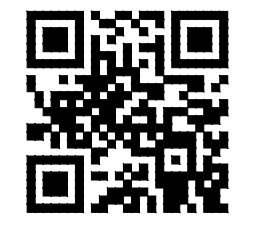


BISCAYNE BAY

1 PROPOSED FLOOR PLAN LEVEL 3
 SCALE: 1/8" = 1'-0"



Atelier architects international
 1800 SW 1st Ave, Suite #604
 Miami, FL 33129
 Phone : (786) 342-1755
 Fax : (305) 974-1980
 www.atelierintl.com



Hernan Santarcangelo, Architect
 AR 96867

Associated Architect



Victor H. Rodriguez, Architect
 AR 94965
 1800 SW 1st Ave, Suite #607
 Miami FL 33129

**7940 WEST AVENUE LLC
 NORTH BAY VILLAGE**

14-097

ALL DRAWINGS AND WRITTEN MATERIAL APPEARING HEREIN CONSTITUTE THE ORIGINAL AND UNPUBLISHED WORK OF ATELIER ARCHITECTS INTERNATIONAL, LLC. AND MAY NOT BE DUPLICATED, USED, OR DISCLOSED WITHOUT THE EXPRESS WRITTEN CONSENT OF ATELIER ARCHITECTS INTERNATIONAL, LLC © 2014

1	29 AUG	SITE PLAN SUBMITTAL
2	31 OCT	REVISION 01

Date: 18 SEPT-14
 Drawn: A.N.V.
 Designed by: H.S.
 Checked by: H.S.
 SCALE: 1/8" = 1'-0"

A1.103

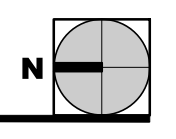
THE DESIGNS INDICATED IN THESE DRAWINGS ARE PROPERTY OF ATELIER ARCHITECTS INTERNATIONAL. ALL COPYRIGHTS RESERVED © 2014



BISCAYNE BAY

1 PROPOSED FLOOR PLAN LEVEL 4

SCALE: 1/8" = 1'-0"



Atelier architects international
1800 SW 1st Ave, Suite #604
Miami, FL 33129
Phone : (786) 342-1755
Fax : (305) 974-1980
www.atelierintl.com



Hernan Santarcangelo, Architect
AR 96867



Victor H. Rodriguez, Architect
AR 94965
1800 SW 1st Ave, Suite #607
Miami FL 33129

7940 WEST AVENUE LLC
NORTH BAY VILLAGE

14-097

ALL DRAWINGS AND WRITTEN MATERIAL APPEARING HEREIN CONSTITUTE THE ORIGINAL AND UNPUBLISHED WORK OF ATELIER ARCHITECTS INTERNATIONAL, LLC. AND MAY NOT BE REPRODUCED, COPIED, OR DISCLOSED WITHOUT THE EXPRESS WRITTEN CONSENT OF ATELIER ARCHITECTS INTERNATIONAL, LLC © 2014

1	29 AUG	SITE PLAN SUBMITTAL
2	31 OCT	REVISION 01

Date: 18 SEPT-14
Drawn: A.N.V.
Designed by: H.S.
Checked by: H.S.
SCALE: 1/8" = 1'-0"

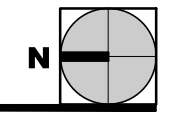
A1.104

THE DESIGNS INDICATED IN THESE DRAWINGS ARE PROPERTY OF ATELIER ARCHITECTS INTERNATIONAL. ALL COPYRIGHTS RESERVED © 2014



BISCAYNE BAY

1 PROPOSED FLOOR PLAN LEVEL 5
SCALE: 1/8" = 1'-0"



Atelier architects international
 1800 SW 1st Ave, Suite #604
 Miami, FL 33129
 Phone : (786) 342-1755
 Fax : (305) 974-1980
 www.atelierintl.com



Hernan Santarcangelo, Architect
 AR 96867



Victor H. Rodriguez, Architect
 AR 94965
 1800 SW 1st Ave, Suite #607
 Miami FL 33129

7940 WEST AVENUE LLC
NORTH BAY VILLAGE

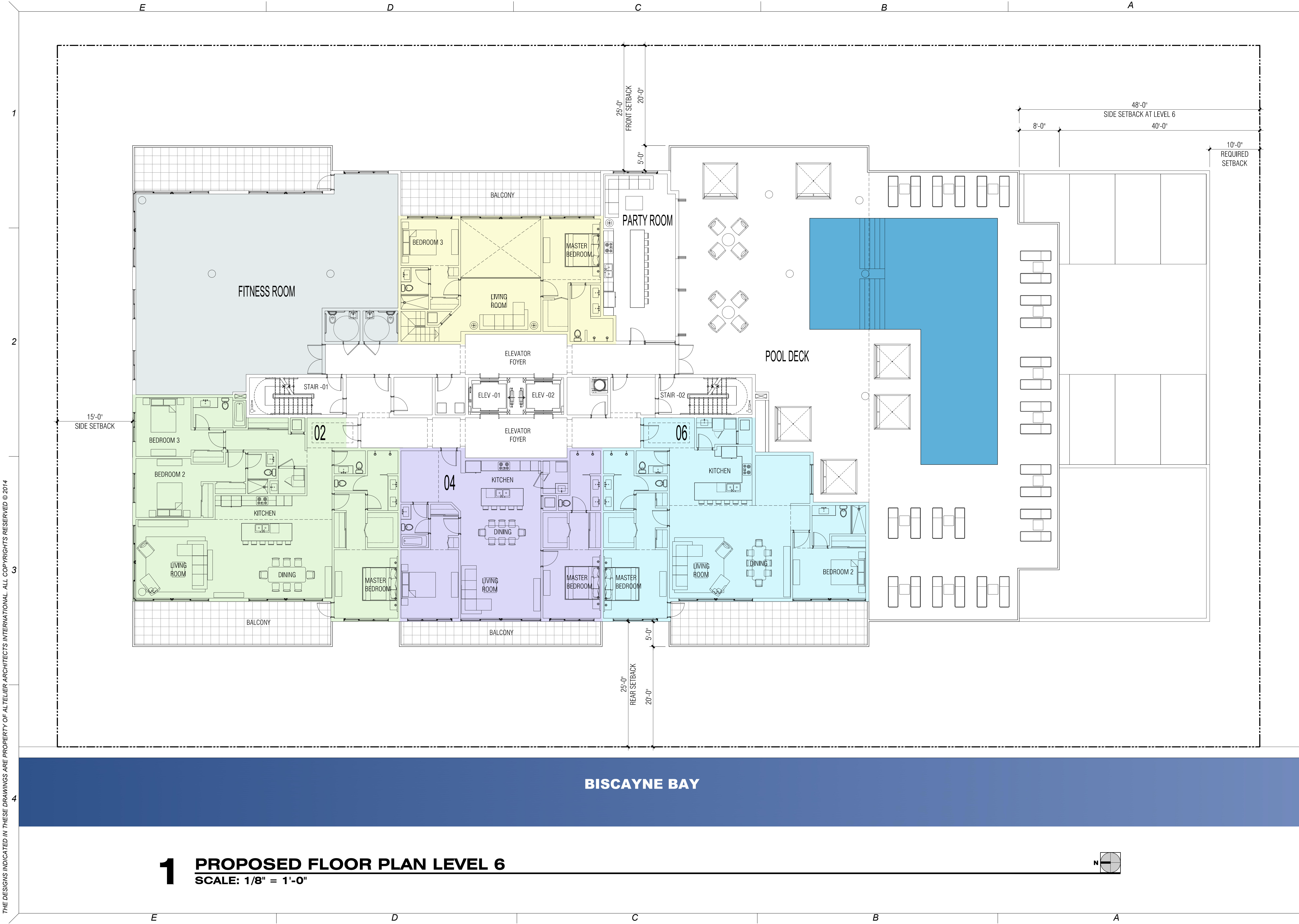
14-097

ALL DRAWINGS AND WRITTEN MATERIAL APPEARING HEREIN CONSTITUTE THE ORIGINAL AND UNPUBLISHED WORK OF ATELIER ARCHITECTS INTERNATIONAL, LLC. AND MAY NOT BE REPRODUCED, COPIED, DULICATED, USED, OR DISCLOSED WITHOUT THE EXPRESS WRITTEN CONSENT OF ATELIER ARCHITECTS INTERNATIONAL, LLC © 2014

1	29 AUG	SITE PLAN SUBMITTAL
2	31 OCT	REVISION 01

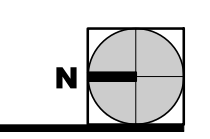
Date: 18 SEPT-14
 Drawn: A.N.V.
 Designed by: H.S.
 Checked by: H.S.
 SCALE: 1/8" = 1'-0"

A1.105

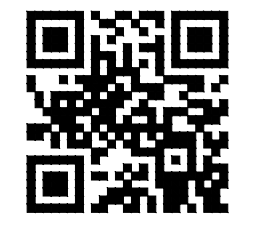


THE DESIGNS INDICATED IN THESE DRAWINGS ARE PROPERTY OF ATELIER ARCHITECTS INTERNATIONAL. ALL COPYRIGHTS RESERVED © 2014

1 PROPOSED FLOOR PLAN LEVEL 6
SCALE: 1/8" = 1'-0"



Atelier architects international
 1800 SW 1st Ave, Suite #604
 Miami, FL 33129
 Phone : (786) 342-1755
 Fax : (305) 974-1980
 www.atelierintl.com



Hernan Santarcangelo, Architect
 AR 96867

Associated Architect



Victor H. Rodriguez, Architect
 AR 94965
 1800 SW 1st Ave, Suite #607
 Miami FL 33129

7940 WEST AVENUE LLC
NORTH BAY VILLAGE

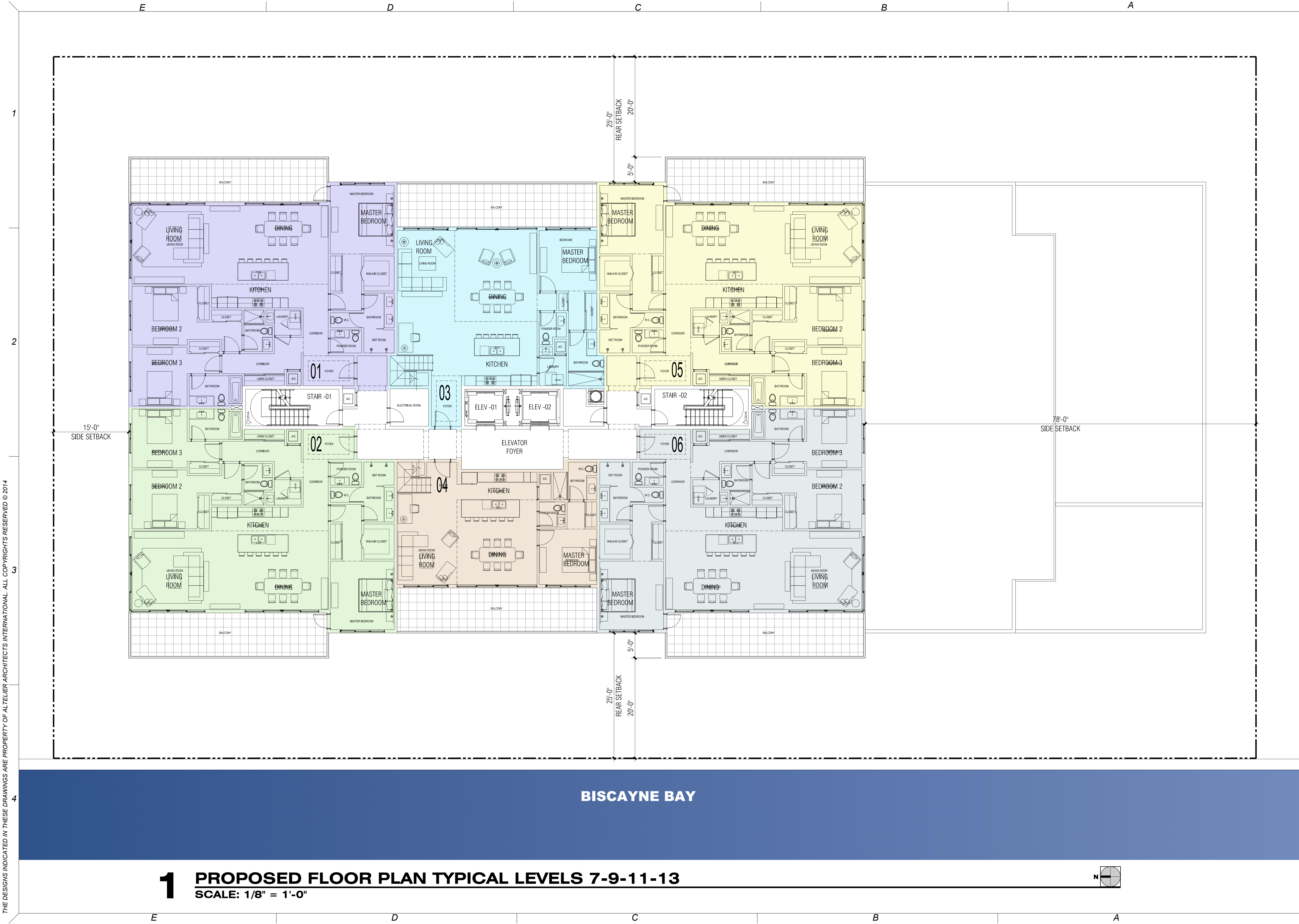
14-097

ALL DRAWINGS AND WRITTEN MATERIAL APPEARING HEREIN CONSTITUTE THE ORIGINAL AND UNPUBLISHED WORK OF ATELIER ARCHITECTS INTERNATIONAL, L.L.C. AND MAY NOT BE REPRODUCED, COPIED, DULICATED, USED, OR DISCLOSED WITHOUT THE EXPRESS WRITTEN CONSENT OF ATELIER ARCHITECTS INTERNATIONAL, L.L.C. © 2014

1	29 AUG	SITE PLAN SUBMITTAL
2	31 OCT	REVISION 01

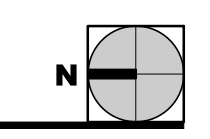
Date: 18 SEPT-14
 Drawn: A.N.V.
 Designed by: H.S.
 Checked by: H.S.
 SCALE: 1/8" = 1'-0"

A1.106

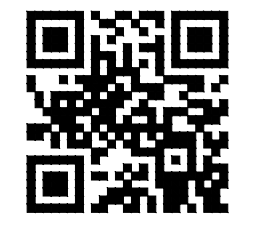


THE DESIGNS INDICATED IN THESE DRAWINGS ARE PROPERTY OF ATELIER ARCHITECTS INTERNATIONAL. ALL COPYRIGHTS RESERVED © 2014

1 PROPOSED FLOOR PLAN TYPICAL LEVELS 7-9-11-13
SCALE: 1/8" = 1'-0"



Atelier architects international
 1800 SW 1st Ave, Suite #604
 Miami, FL 33129
 Phone : (756) 942-1755
 Fax : (305) 974-1980
 www.atelierintl.com



Hernan Santarcangelo, Architect
 AR 96867



Victor H. Rodriguez, Architect
 AR 94965
 1800 SW 1st Ave, Suite #607
 Miami FL 33129

7940 WEST AVENUE LLC
NORTH BAY VILLAGE

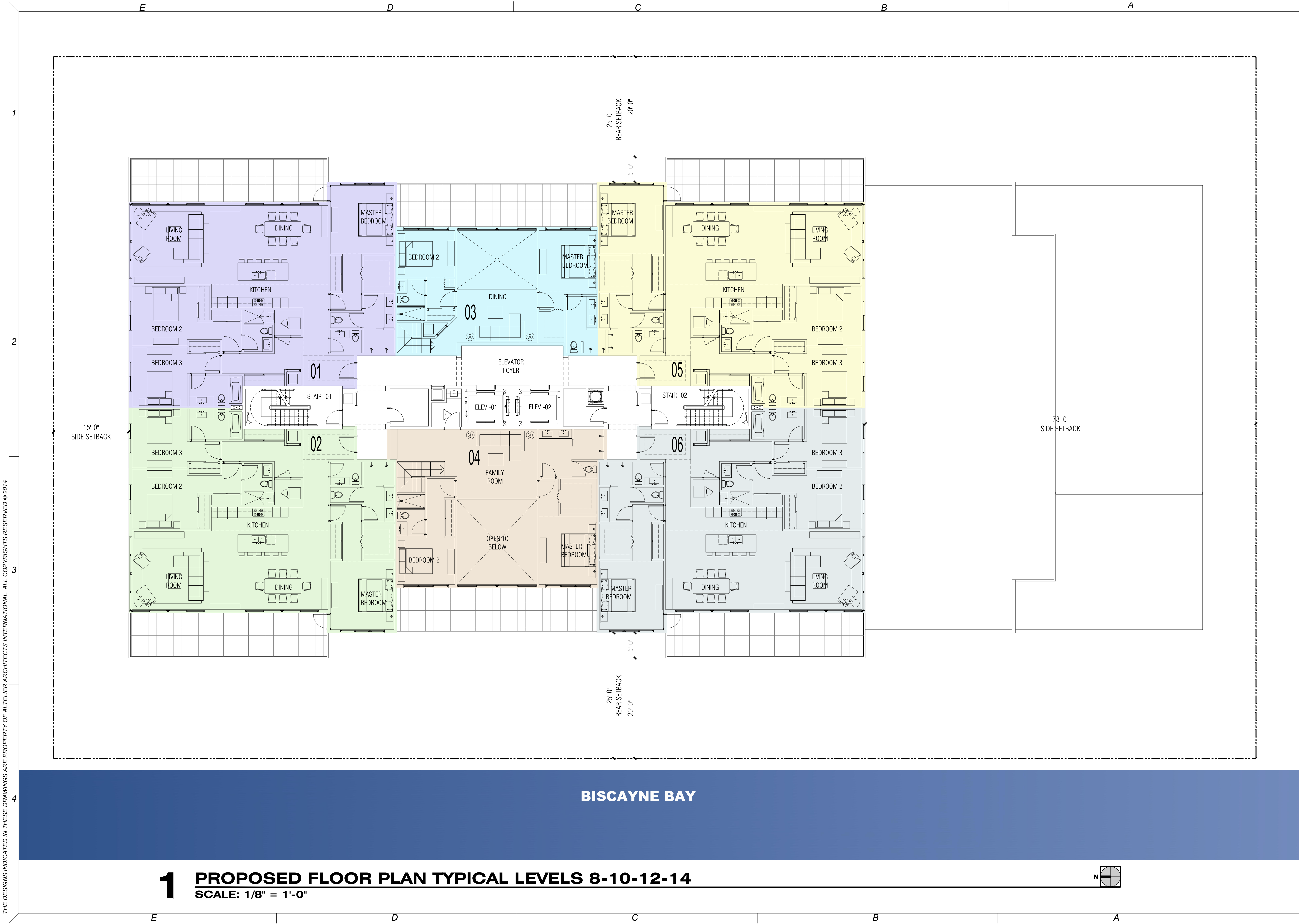
14-097

ALL DRAWINGS AND WRITTEN MATERIAL APPEARING HEREIN CONSTITUTE THE ORIGINAL AND UNPUBLISHED WORK OF ATELIER ARCHITECTS INTERNATIONAL, L.L.C. AND MAY NOT BE REPRODUCED, COPIED, OR DISCLOSED WITHOUT THE EXPRESS WRITTEN CONSENT OF ATELIER ARCHITECTS INTERNATIONAL, L.L.C. © 2014

1	29 AUG	SITE PLAN SUBMITTAL
2	31 OCT	REVISION 01

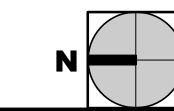
Date: 18 SEPT-14
 Drawn: A.N.V.
 Designed by: H.S.
 Checked by: H.S.
 SCALE: 1/8" = 1'-0"

A1.107



BISCAYNE BAY

1 PROPOSED FLOOR PLAN TYPICAL LEVELS 8-10-12-14
SCALE: 1/8" = 1'-0"



Atelier architects international
1800 SW 1st Ave, Suite #604
Miami, FL 33129
Phone : (786) 342-1755
Fax : (305) 974-1980
www.atelierintl.com



Hernan Santarcangelo, Architect
AR 96867

Associated Architect



Victor H. Rodriguez, Architect
AR 94965
1800 SW 1st Ave, Suite #607
Miami FL 33129

**7940 WEST AVENUE LLC
NORTH BAY VILLAGE**

14-097

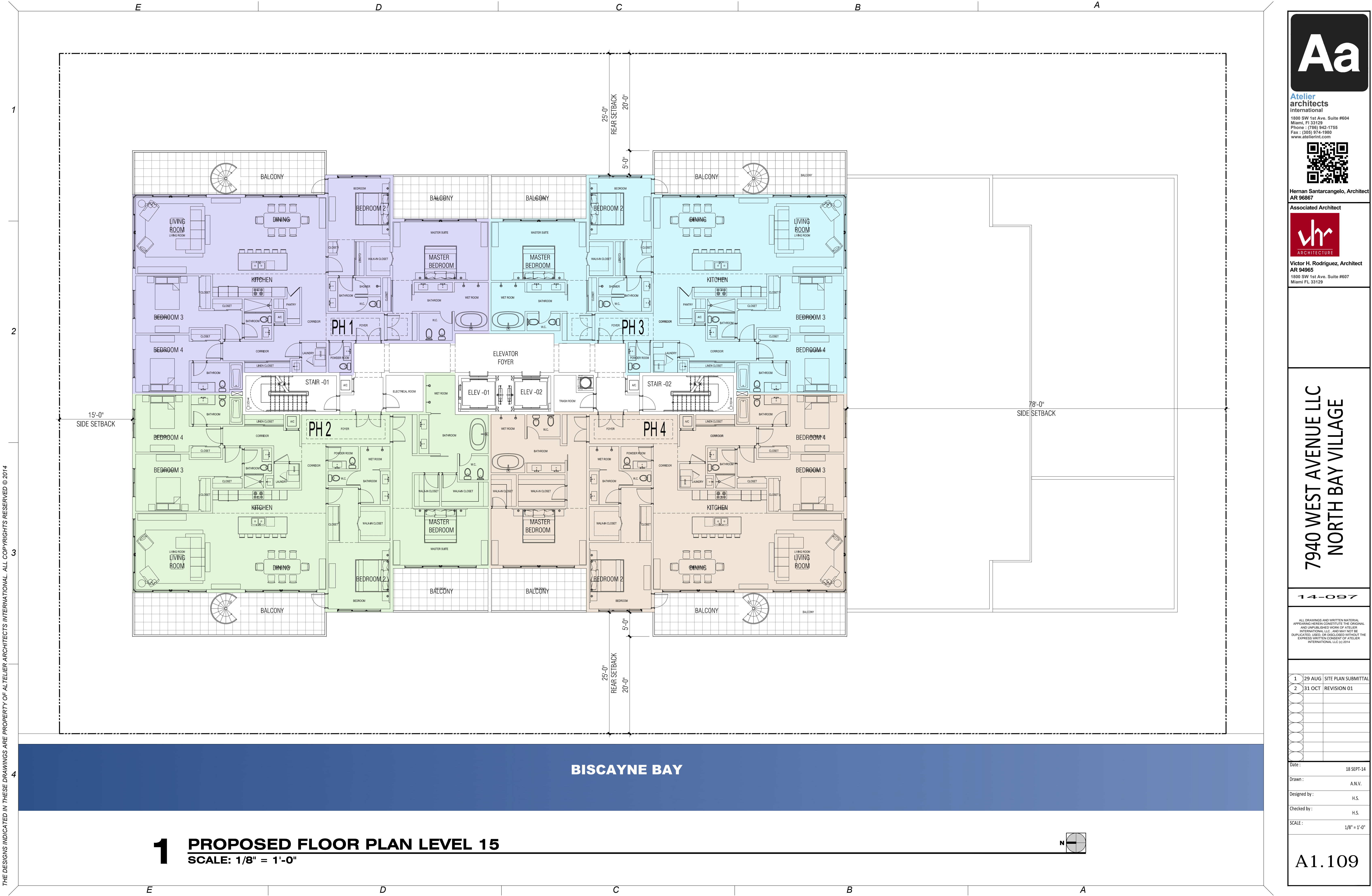
ALL DRAWINGS AND WRITTEN MATERIAL APPEARING HEREIN CONSTITUTE THE ORIGINAL AND UNPUBLISHED WORK OF ATELIER ARCHITECTS INTERNATIONAL, LLC. AND MAY NOT BE REPRODUCED, COPIED, OR DISCLOSED WITHOUT THE EXPRESS WRITTEN CONSENT OF ATELIER ARCHITECTS INTERNATIONAL, LLC © 2014

1	29 AUG	SITE PLAN SUBMITTAL
2	31 OCT	REVISION 01

Date: 18 SEPT-14
Drawn: A.N.V.
Designed by: H.S.
Checked by: H.S.
SCALE: 1/8" = 1'-0"

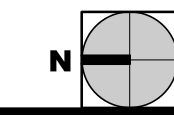
A1.108

THE DESIGNS INDICATED IN THESE DRAWINGS ARE PROPERTY OF ATELIER ARCHITECTS INTERNATIONAL. ALL COPYRIGHTS RESERVED © 2014



THE DESIGNS INDICATED IN THESE DRAWINGS ARE PROPERTY OF ATELIER ARCHITECTS INTERNATIONAL. ALL COPYRIGHTS RESERVED © 2014

1 PROPOSED FLOOR PLAN LEVEL 15
SCALE: 1/8" = 1'-0"



Atelier architects international
 1800 SW 1st Ave. Suite #604
 Miami, FL 33129
 Phone : (786) 942-1755
 Fax : (305) 974-1980
 www.atelierintl.com



Hernan Santarcangelo, Architect
 AR 96867



Victor H. Rodriguez, Architect
 AR 94965
 1800 SW 1st Ave. Suite #607
 Miami FL 33129

7940 WEST AVENUE LLC
NORTH BAY VILLAGE

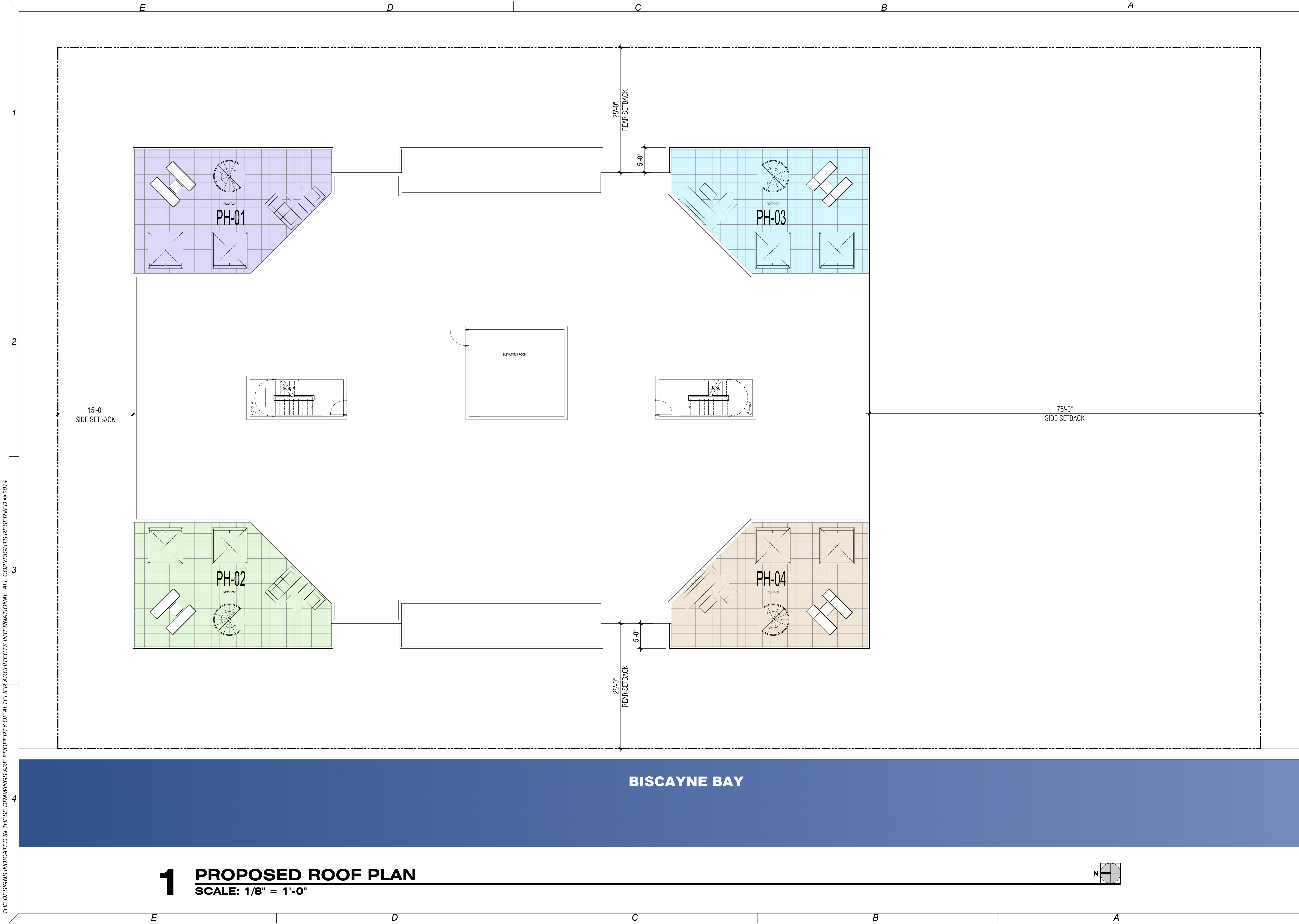
14-097

ALL DRAWINGS AND WRITTEN MATERIAL APPEARING HEREIN CONSTITUTE THE ORIGINAL AND UNPUBLISHED WORK OF ATELIER ARCHITECTS INTERNATIONAL, L.L.C. AND MAY NOT BE REPRODUCED, COPIED, OR DISCLOSED WITHOUT THE EXPRESS WRITTEN CONSENT OF ATELIER ARCHITECTS INTERNATIONAL, L.L.C. © 2014

1	29 AUG	SITE PLAN SUBMITTAL
2	31 OCT	REVISION 01

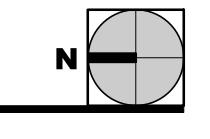
Date: 18 SEPT-14
 Drawn: A.N.V.
 Designed by: H.S.
 Checked by: H.S.
 SCALE: 1/8" = 1'-0"

A1.109

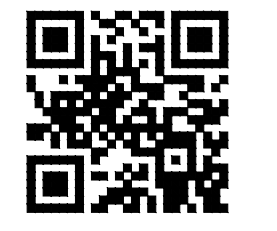


THE DESIGNS INDICATED IN THESE DRAWINGS ARE PROPERTY OF ATELIER ARCHITECTS INTERNATIONAL. ALL COPYRIGHTS RESERVED © 2014

1 PROPOSED ROOF PLAN
SCALE: 1/8" = 1'-0"



Atelier architects international
1800 SW 1st Ave, Suite #604
Miami, FL 33129
Phone : (786) 942-1755
Fax : (305) 974-1980
www.atelierint.com



Hernan Santarcangelo, Architect
AR 96867

Associated Architect



Victor H. Rodriguez, Architect
AR 94965
1800 SW 1st Ave, Suite #607
Miami FL 33129

**7940 WEST AVENUE LLC
NORTH BAY VILLAGE**

14-097

ALL DRAWINGS AND WRITTEN MATERIAL APPEARING HEREIN CONSTITUTE THE ORIGINAL AND UNPUBLISHED WORK OF ATELIER ARCHITECTS INTERNATIONAL, LLC. AND MAY NOT BE REPRODUCED, COPIED, DULICATED, USED, OR DISCLOSED WITHOUT THE EXPRESS WRITTEN CONSENT OF ATELIER ARCHITECTS INTERNATIONAL, LLC © 2014

1	29 AUG	SITE PLAN SUBMITTAL
2	31 OCT	REVISION 01

Date: 18 SEPT-14
Drawn: A.N.V.
Designed by: H.S.
Checked by: H.S.
SCALE: 1/8" = 1'-0"

A1.110

THE DESIGNS INDICATED IN THESE DRAWINGS ARE PROPERTY OF ATELIER ARCHITECTS INTERNATIONAL. ALL COPYRIGHTS RESERVED © 2014

- 1
 - 2
 - 3
 - 4
- ROOF LEVEL
ELEV. + 159'-0" NGVD
 - LEVEL 15
ELEV. + 148'-0" NGVD
 - LEVEL 14
ELEV. + 138'-3" NGVD
 - LEVEL 13
ELEV. + 128'-6" NGVD
 - LEVEL 12
ELEV. + 118'-9" NGVD
 - LEVEL 11
ELEV. + 109'-0" NGVD
 - LEVEL 10
ELEV. + 99'-3" NGVD
 - LEVEL 9
ELEV. + 89'-6" NGVD
 - LEVEL 8
ELEV. + 79'-9" NGVD
 - LEVEL 7
ELEV. + 70'-0" NGVD
 - LEVEL 6 (POOL)
ELEV. + 58'-0" NGVD
 - LEVEL 5 PARKING GARAGE
ELEV. + 48'-0" NGVD
 - LEVEL 4 - PARKING GARAGE
ELEV. + 38'-0" NGVD
 - LEVEL 3 - PARKING GARAGE
ELEV. + 30'-0" NGVD
 - LEVEL 2 - PARKING GARAGE
ELEV. + 22'-0" NGVD
 - GROUND LEVEL - PARKING
ELEV. + 9'-0" NGVD
 - GROUND LEVEL - PARKING
ELEV. + 8'-0" NGVD (B.F.E.)

170'-0"
TOP OF HIGHEST ROOF STRUCTURE (MECHANICAL EQUIPMENT SCREENING)

150'-0"
TOP OF ROOF OF LAST RESIDENTIAL FLOOR

30'-0"
HEIGHT OF PEDESTAL

BISCAYNE BAY
WEST PROPERTY LINE

EAST PROPERTY LINE
WEST DRIVE

1 PROPOSED SOUTH ELEVATION
SCALE: 1/8" = 1'-0"

FUTURE ROOF EQUIPMENT TO BE DETERMINED. ROOF TOP MECHANICAL EQUIPMENT IS TO BE SCREENED AS TO AVOID DIRECT VISUAL FROM STREET LEVEL



Atelier architects international
1800 SW 1st Ave, Suite #604
Miami, FL 33129
Phone : (786) 342-1755
Fax : (305) 974-1980
www.atelierintl.com



Hernan Santarcangelo, Architect
AR 96867



Victor H. Rodriguez, Architect
AR 94965
1800 SW 1st Ave, Suite #607
Miami FL 33129

**7940 WEST AVENUE LLC
NORTH BAY VILLAGE**

14-097

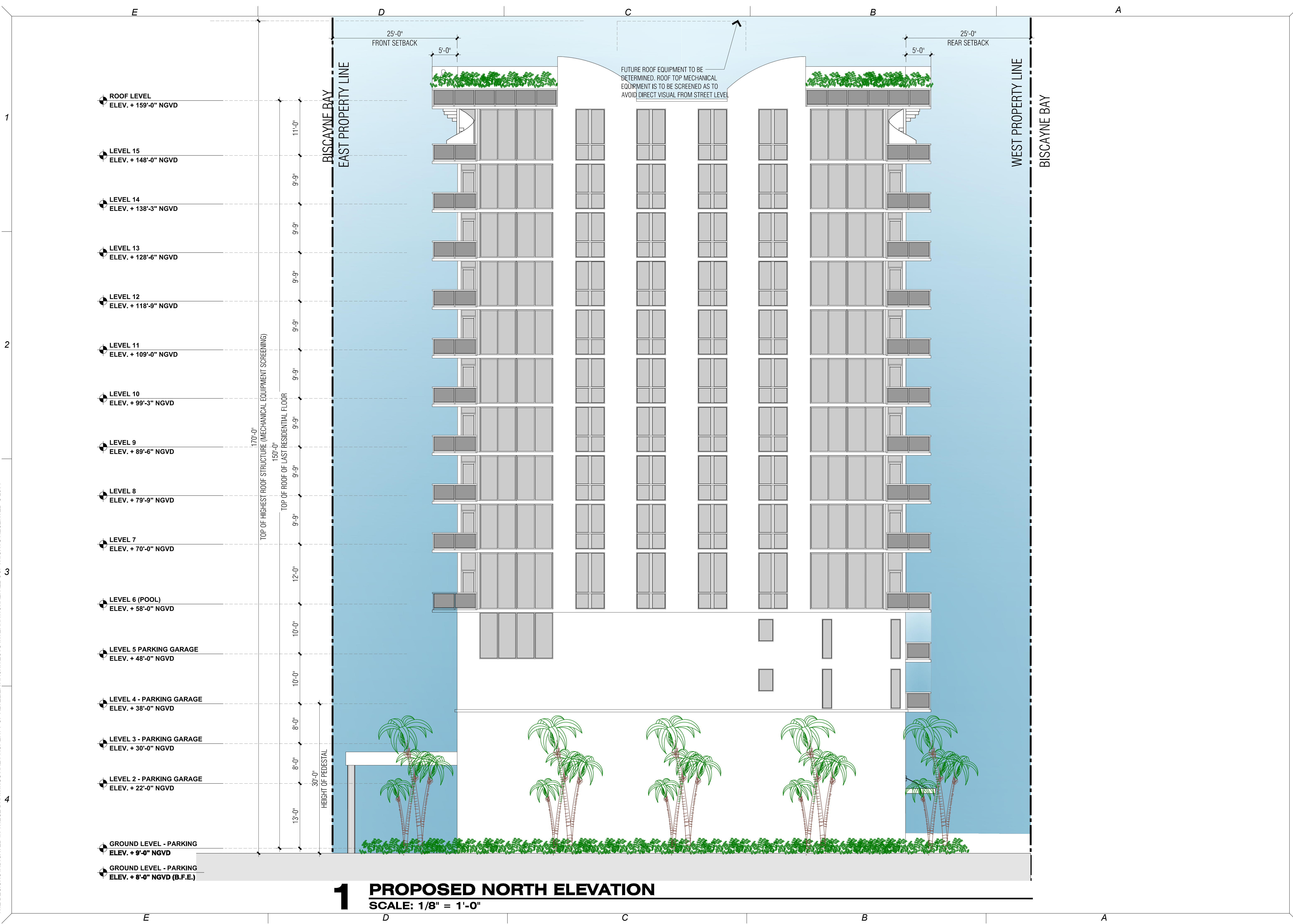
ALL DRAWINGS AND WRITTEN MATERIAL APPEARING HEREIN CONSTITUTE THE ORIGINAL AND UNPUBLISHED WORK OF ATELIER ARCHITECTS INTERNATIONAL, LLC. AND MAY NOT BE REPRODUCED, COPIED, OR DISCLOSED WITHOUT THE EXPRESS WRITTEN CONSENT OF ATELIER ARCHITECTS INTERNATIONAL, LLC © 2014

1	29 AUG	SITE PLAN SUBMITTAL
2	31 OCT	REVISION 01

Date: 18 SEPT-14
Drawn: A.N.V.
Designed by: H.S.
Checked by: H.S.
SCALE: 1/8" = 1'-0"

A1.111

THE DESIGNS INDICATED IN THESE DRAWINGS ARE PROPERTY OF ATTELIER ARCHITECTS INTERNATIONAL. ALL COPYRIGHTS RESERVED © 2014



1 PROPOSED NORTH ELEVATION
SCALE: 1/8" = 1'-0"



Atelier architects international
1800 SW 1st Ave, Suite #604
Miami, FL 33129
Phone : (786) 342-1755
Fax : (305) 974-1980
www.atelierintl.com



Hernan Santarcangelo, Architect
AR 96867



Victor H. Rodriguez, Architect
AR 94965
1800 SW 1st Ave, Suite #607
Miami FL 33129

**7940 WEST AVENUE LLC
NORTH BAY VILLAGE**

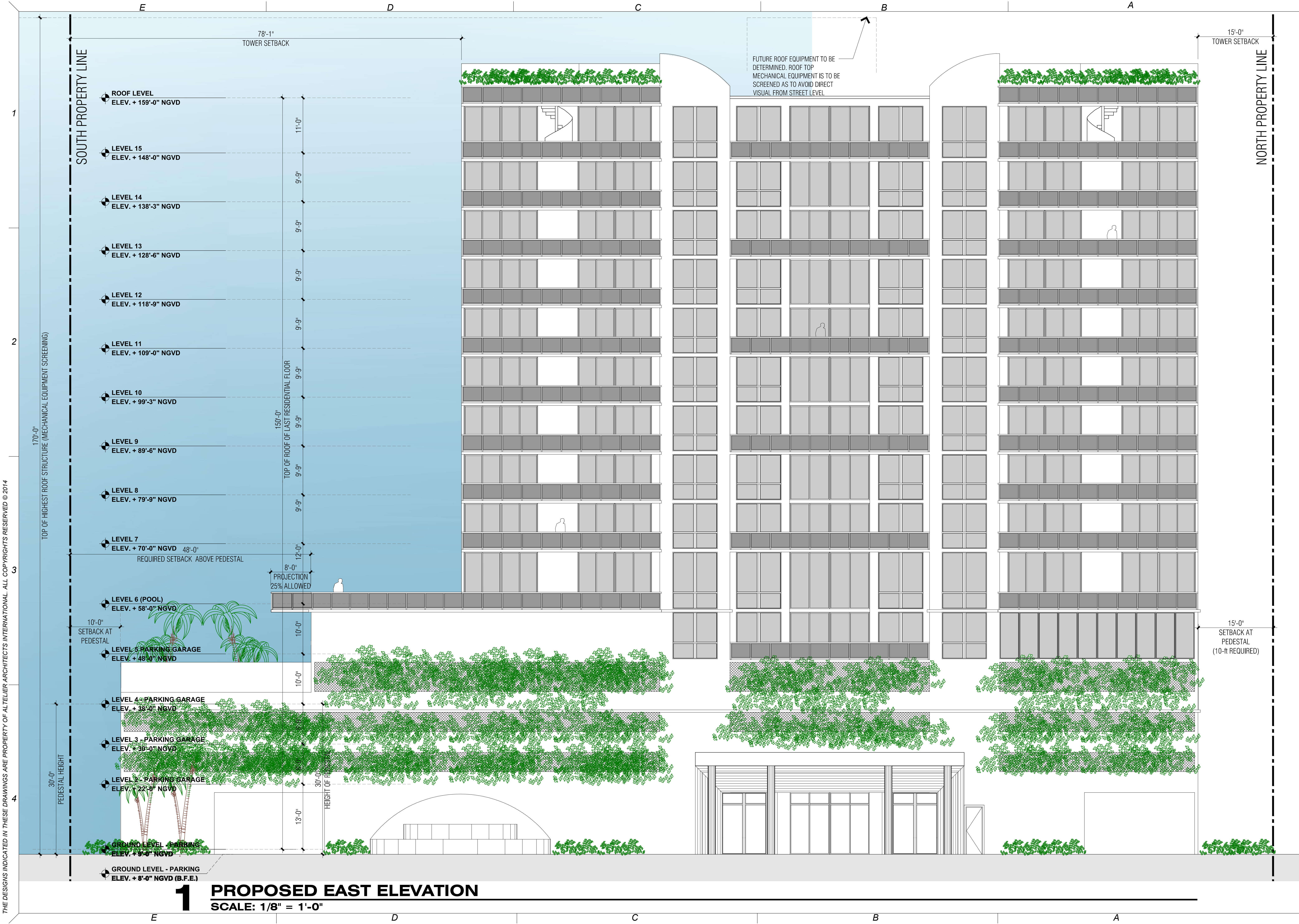
14-097

ALL DRAWINGS AND WRITTEN MATERIAL APPEARING HEREIN CONSTITUTE THE ORIGINAL AND UNPUBLISHED WORK OF ATTELIER ARCHITECTS INTERNATIONAL, L.L.C. AND MAY NOT BE REPRODUCED, COPIED, OR DISCLOSED WITHOUT THE EXPRESS WRITTEN CONSENT OF ATTELIER ARCHITECTS INTERNATIONAL, L.L.C. © 2014

1	29 AUG	SITE PLAN SUBMITTAL
2	31 OCT	REVISION 01

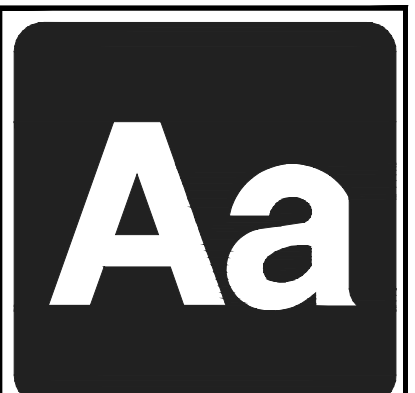
Date: 18 SEPT-14
Drawn: A.N.V.
Designed by: H.S.
Checked by: H.S.
SCALE: 1/8" = 1'-0"

A1.112

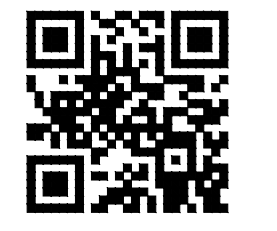


THE DESIGNS INDICATED IN THESE DRAWINGS ARE PROPERTY OF ATTELIER ARCHITECTS INTERNATIONAL. ALL COPYRIGHTS RESERVED © 2014

1 PROPOSED EAST ELEVATION
 SCALE: 1/8" = 1'-0"



Atelier architects
 International
 1800 SW 1st Ave, Suite #604
 Miami, FL 33129
 Phone: (786) 342-1755
 Fax: (305) 974-1980
 www.atelierintl.com



Hernan Santarcangelo, Architect
 AR 96867



Victor H. Rodriguez, Architect
 AR 94965
 1800 SW 1st Ave, Suite #607
 Miami FL 33129

7940 WEST AVENUE LLC
NORTH BAY VILLAGE

14-097

ALL DRAWINGS AND WRITTEN MATERIAL APPEARING HEREIN CONSTITUTE THE ORIGINAL AND UNPUBLISHED WORK OF ATTELIER ARCHITECTS INTERNATIONAL, L.L.C. AND MAY NOT BE DUPLICATED, USED, OR DISCLOSED WITHOUT THE EXPRESS WRITTEN CONSENT OF ATTELIER ARCHITECTS INTERNATIONAL, L.L.C. © 2014

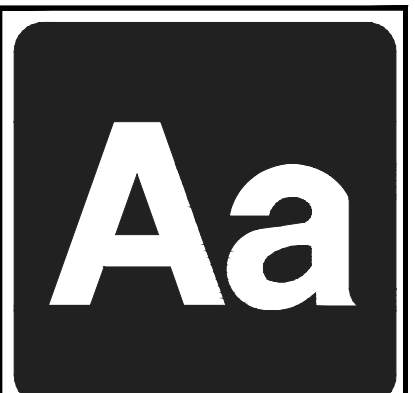
1	29 AUG	SITE PLAN SUBMITTAL
2	31 OCT	REVISION 01

Date: 18 SEPT-14
 Drawn: A.N.V.
 Designed by: H.S.
 Checked by: H.S.
 SCALE: 1/8" = 1'-0"

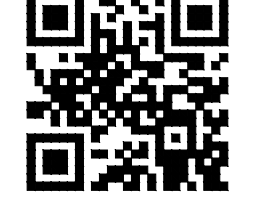
A1.113



1 PROPOSED WEST ELEVATION
SCALE: 1/8" = 1'-0"



Atelier architects international
1800 SW 1st Ave, Suite #604
Miami, FL 33129
Phone: (786) 342-1755
Fax: (305) 974-1980
www.atelierintl.com



Hernan Santarcangelo, Architect
AR 96867



Victor H. Rodriguez, Architect
AR 94965
1800 SW 1st Ave, Suite #607
Miami FL 33129

7940 WEST AVENUE LLC
NORTH BAY VILLAGE

14-097

ALL DRAWINGS AND WRITTEN MATERIAL APPEARING HEREIN CONSTITUTE THE ORIGINAL AND UNPUBLISHED WORK OF ATELIER ARCHITECTS INTERNATIONAL, L.L.C. AND MAY NOT BE REPRODUCED, COPIED, OR DISCLOSED WITHOUT THE EXPRESS WRITTEN CONSENT OF ATELIER ARCHITECTS INTERNATIONAL, L.L.C. © 2014

1	29 AUG SITE PLAN SUBMITTAL
2	31 OCT REVISION 01

Date: 18 SEPT-14
Drawn by: A.N.V.
Designed by: H.S.
Checked by: H.S.
SCALE: 1/8" = 1'-0"

A1.114